

# PONTIACTION

OCT-NOV 2022

46 YEARS OF JUST  
HAVING FUN



Page 3: Everything you ever  
wanted to know about  
“Petroliana” collecting

PLUS:

From the Chief

Calendar of Events

Das Awkscht Fescht

Duryea Days

Flat Head Reunion

Knoebels

Junk Yard Tour



The Original *Pontiacion* Chapter...  
The **Keystone State Chapter**  
**Pontiac Oakland Club International**



# From The Chief

Hello, All,

As we come to the last quarter of a terrific year, I want to remind everyone of what we have coming up.

**OCTOBER.....** we have our Fall Car Show at the Shrine of Padre Pio. We are expecting a really great show as we build a new tradition at this location. This car show occurs right before Hershey week, and many club members will be in Hershey for much of the week.

In mid October we will have our two day trip to the Maryland Eastern Shore. We have a full bus and a few folks meeting us at the days events. This is something we have not done for many years, and I think it will be a successful trip. Look for more trips like this in the future.

**NOVEMBER....**will bring us our annual Junk Yard Tour. Steve Liebert has worked hard once again to assure a fun day. If you have not participated in the past, put this one your list as it is really fun. More information in this newsletter regarding time and place.

**DECEMBER.....**this brings us to our annual Christmas Party at the Bird-in-Hand restaurant in Bird-in-Hand, Pa. This holiday celebration is always fun as we review the year, tell some jokes, and exchange gifts--not to mention the terrific food. Again more information in this newsletter.

So come join us as we finalize the year and enjoy your fellow club members.

See ya down the road.....

Tom Wright

**1963 Pontiac Catalina Black 421 Super Duty SD 4 Speed  
Tribute & Ride My Car Story with Lou Costabile**

<https://youtu.be/PPXtDWZhVeE>

**Stan Antlocer And The World's Fastest Pontiac Tempest"**

<https://youtu.be/ztEehFmwPA8>

**Watch "The Pontiac That Ate Ferraris: How A 1963 Tempest  
Super Duty Dominated Daytona In The Rain"**

<https://www.youtube.com/watch?v=aQblwjBXQKA&authuser=0>

# Petroliana Collecting – Part 1

## Gas Pumps

By Bill McIntosh

### Introduction

A great companion hobby to antique and classic car collecting is “petroliana” collecting. Petroliana refers to all manner of things associated with the refining and distribution of petroleum. Generally, collectors focus on three major categories: (1) gas pumps, (2) oil cans and (3) signage. However, anything is fair game: for example, I once had a TEXACO credit card machine in my collection. That said, this first article will focus on gas pumps, specifically those in my modest collection.

### The Early Gas Pumps

Gas pumps were not really invented but rather evolved. If anyone could be credited with the idea, it had to be John J. Tokheim of Cedar Rapids, Iowa. His manufacturing business started in 1901 and began selling so called “curb pumps” -- those that sat close to a curb in front of a store. In 1913, Gulf Refining Company opened the first “off street” filling station where multiple cars could be filled at one time. Within two years, most major companies were operating their own stations. Stations were generally equipped with simple pumping devices of one kind or another.



graduated glass cylinder and then, by gravity, the gas was dispensed into the car.

From there, it was easy to imagine the pump and glass cylinder integrated into one unit. In 1917, the Wayne Pump Company offered the first self-contained “visible measure” pump designed as a single unit. Within two years, other manufacturers offered such units and most major oil companies were specifying same. These so-called “visible” gas pumps came into standard use throughout the 1920s. A visible gas pump is shown at the right.

### The First Mechanical Pumps

In 1925, manufacturers began experimenting with mechanical measuring pumps. Contrary to visible pumps,

*continued on page 4*

these were pumps that included a sealed, calibrated measuring device. These devices were of a clock-like dial that registered the amount of gas dispensed. These types of pumps are known as “clock-faced” pumps. A typical clock-faced pump is shown on the left.

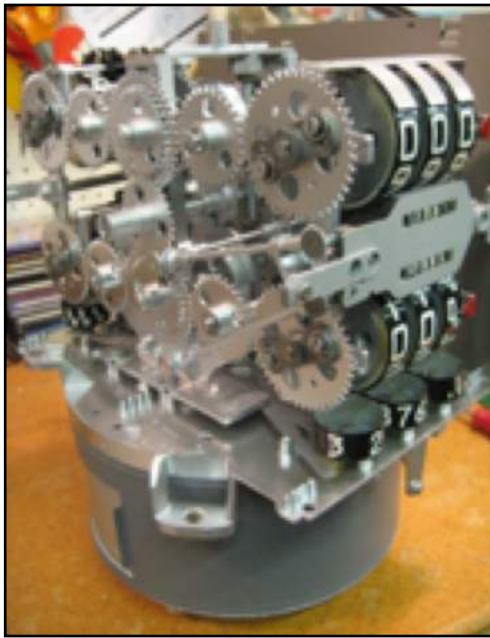


While these pumps calculated the gallons dispensed, they did not calculate the price. Since gas was sold at unusual fractional prices (e.g., 23-9/10 cents per gallon), computing the cost was complex.

In 1934, Wayne technical people solved the problem by inventing the “interlocking price computer.” Entirely mechanical, using a series of gear sets, each revolution the gear train activated gallons and dollar sale indicators simultaneously while a specific price was set.

### **The Veeder-Root Computer**

To my amazement, Wayne licensed their invention to the Veeder-Root Company. With apparent patent protection, this licensee had exclusive rights over any similar type of computer calculator. This “monopoly” meant that all pump manufacturers had to buy or otherwise license this device from the Veeder-Root Company. Thus, Veeder Root Company manufactured and sold the Veeder Root computer to all manufacturers of gas pumps from the late 1940s into the early 1960s. While I have three different brands of gas pumps (see below) in my collection, all of my pumps have Veeder Root calculators. Of course, the age of transistors brought fully electric calculators and made the Veeder Root calculator obsolete. Still, it was a good run.



At left is a photo of a restored Veeder Root calculator (cover removed). This is one of three I recently had completely refurbished for three Tokheim gas pumps currently under restoration. It and the two others like them were restored by Jerry Goulet of Flint, Michigan. To my knowledge, Jerry is the last living person who restores Veeder Root calculators!

### **My Gas Pumps**

I have had ten (10) gas pumps in my collection for some time. I acquired all of them between 2001 and 2005 from JDT Petroleum located just outside of Philadelphia. JDT Petroleum is in the business of buying old gas pumps of almost any kind. The result is that they have a “gas pump junk yard” with pumps dating back to the 1930s (at least they did at the time). JDT

*continued on page 5*

dismantles old gas pumps and sells them to people who need parts, particularly for pumps that no longer have parts manufactured for them. Much of their business is done with customers in third world countries where lax laws (or none at all) permit the use of very old (and undoubtedly polluting) gas pumps.

Similar to the automobile industry and over the past century, there could have been hundreds of companies manufacturing some sort of gas pump or another in the 1900s. The first pump I acquired and the first one I restored is a Gilbert & Barker (G&B). The company that evolved out of G&B through a long series of acquisitions is now called Gilbarco-Veeder-Root or simply Gilbarco. The company started in 1902 and changed its name to Gilbarco in 1935. Gilbarco remains one of the few companies to manufacture gas pumps today. Indeed, when you stop to fill up your car, look on the side of the pump and you will likely see a nameplate with the Gilbarco name.



The Gilbarco pump I have is a Model 98 manufactured around 1938, so it probably was in service from the immediate pre-WWII years to well into 1950s and maybe beyond. This is a computing pump with a sight glass in its face. (The sight glass of the “new” computing pumps appears to be a historical remnant going back to the original visible gas pumps). The sight glass allows customers to visualize the gas as it is being pumped, and most have some kind of “spinner” that twirls as the gas flows by it. When I acquired this pump, it was “dressed” (paint, lettering, etc.) as an Esso Extra. A picture of this pump is to the left. This is a very tall pump, similar to most models from the 1930s and 1940s (with the globe it measures 90 inches). While the globe is a reproduction the pump handle is an original Gilbarco model.

I made three trips to JDT Petroleum. On the first, I acquired my Gilbarco. On the second, I acquired four Bennett pumps. On the last, I acquired five Tokheim pumps. All of the Bennett pumps have had some form of restoration if not a complete one. All of my Bennett pumps in the collection are Model 766. Like Gilbarco, the Bennett Pump Company was one of the major players in the gas pump manufacturing industry of the 18th century. Started in 1919, the company evolved into one selling a variety of gas station service equipment. During the 1940s and 1950s, sales were concentrated in gas pumps. However, the company’s most famous product was the ECO Tireflator (I have one).

*continued on page 6*

The Bennett Model 766 was manufactured and sold from 1948 through the mid-1950s. The only difference between any of mine is that some have a nozzle cover – a hood-like fitting protruding from side where the nozzle tip is stored. The others do not have that feature but rather a simple stainless trim. All feature “ad glass” panels at the bottom of the window, and all have a weight-actuated hose reel feature.



Shown at left, this pump is one of two “matched” Bennett 766 pumps dressed in TEXACO attire, this one being Fire Chief, their regular grade of gas. The most unusual feature of this pump is that the globe on top is an original “black T.” This probably dates back to the 1940s or earlier. It is described as a “black T” because the outline around the letter T (in green) is black. Later in TEXACO’s history, they changed the outline color to white. Note that this pump has not been fully restored yet. A partial restoration was done such that it displayed well and lit up but did not take the effort of a full restoration.



This too is a Bennett 766 and the “match” to the TEXACO Fire Chief Bennett. Again, this pump was partially restored for purposes of display and is dressed as TEXACO Sky Chief, their premium grade of gas. The globe on this pump is a reproduction with a milk glass “frame” to match the Fire Chief pump. Note that both pumps have original porcelain pump signs advertising the fuel to be dispensed from the respective pump.

*continued on page 7*



This Bennett 766 was restored as an Esso regular grade pump. While this could be thought of as the “match” to the Gilbarco Esso Extra pump, a true match would be another Gilbarco 98. This pump has a very large diameter globe on top. I won this original globe at an auction on one of my many trips to look for interesting petroliana. While original (which gives it some value), it probably would best belong on a visible gas pump. Visible pumps were generally large if not massive and very, very tall.



This last Bennett 766 was restored as a “Save More” pump. At one of the many petroliana auctions I attended, I acquired this very original globe that graces the top of the pump. I know little or nothing about this brand other than this is the regular gas pump, and it was probably a brand that appeared in the mid-west in the 1950s.

The last five pumps in my collection are all Tokheim Model 39 pumps. If you remember back to the early part of this article, it was John J. Tokheim who was credited with the idea of the gas pump. Starting his company in the early part of the 18th century his first pump was produced and patented in 1901. Tokheim Company had a long and prolific history. They rode the wave of

*continued on page 8*

all major changes in the industry all the way to the 1960s into the era of transistorized/electric calculators. In 2002, the Tokheim Corporation closed and filed for bankruptcy.

Tokheim produced a large variety of its Model 39 from 1949 through 1959. This pump is one of the most produced and popular of collectors. At least one company has produced full-size replicas of this pump. The majority of my pumps were made in 1950 and, with one notable exception, are the Model 39L-RP. Specifically, the 39L-RP featured rubber to hold the glass, door hinges, hose on a retracting cable and ad panels. All of mine are exactly the same with the exception of the fact that they do not have ad panels.

Of my five Tokheim 39s, one is a modified version that does not have the usual start/shut-off gear. My guess is that it was used in a private setting rather than a commercial gas station. All of these pumps were in pretty bad shape, and, until recently, I was not sure I was going to restore them. But rather than send them to the scrap yard, I thought I could get at least three restored pumps out of the five, using the other two for parts.



Serious work on restoration started over a year ago. One pump is almost finish and shown to the left. This one and another are being restored as Canadian brands (namely “SuperTest” and “Maple Leaf Gasoline”) as a tribute to my native land, Canada. The third is being restored for my brother as a “Sinclair” pump.

By the way, the only major manufacturer of gas pumps that has survived to today, other than Gilbarco, is Wayne, as far as I can determine. Look for the brand name located on the side of the gas pump where you dispense your own gasoline.

#### References:

1. *An Illustrated Guide to Gas Pumps* by Jack Sim, 2nd Edition, 2008, Krause Publications (I believe a 3<sup>rd</sup> edition has been published)
2. *Gas Pump Collector's Guide* by Scott Benjamin & Wayne Henderson, 1996 MBI Publishing Company





# 2022 CALENDAR OF EVENTS



**March 20, Sunday: Delayed Board and Planning meeting; Bird-in-Hand Fire House; 1pm start. Food provided**

**April 23, Saturday: Breakfast (optional) and tour of American on Wheels see website for details and sign up.**

**June 5, Sunday: 43rd GM on Display; Macungie Memorial Park, Macungie PA; IF YOU DID NOT GO YOU MISSED A GOODIE**

**July 12-16, National Convention (50th) – Catoosa, OK**

**August 7, Sunday: Club Day at Das Awkscht Fescht;**

**THANK YOU ALL WHO CAME**

**Oct 2, Sunday: ALL GM show, PADRE PIO SHRINE, Bally, PA**

**HOPE THE RAIN HOLDS OFF**

**Oct 15 & 16: 2 day trip to the Eastern shore of MD/VA; details in this newsletter 40 PEOPLE GOING - FANTASTIC**

**November 25, Friday: Black Friday Junk Yard Tour, location in Lower Bucks County. *Details on page 14***

**December 3, Saturday: Christmas Party, Bird-In-Hand Restaurant, 12:30p**

**January 7 or 14?, 2022, Sunday: Board/Planning Meeting, Bird-In-Hand**

**Click th link below to get an update on the Pontiac Transportation Museum**

<https://drive.google.com/file/d/19dl5nWDdAJRjhjoAGxYgmTtfTQYJAsfn/view?usp=sharing>

## **Pontiac Transportation Museum Bricks:**

There has been some renewed interest in the support of the Keystone State Chapter program to surround the Chapter's 4 - 8 x 8 array on the front patio of the museum. If you would like to participate and be a permanent part of Pontiac history, please contact me, A J Koszi at [r62gp@aol.com](mailto:r62gp@aol.com). We currently have a commitment of 9 of the necessary 16 bricks to surround the array. Your donation is totally tax deductible. Help the Chapter make this happen, and help keep the Pontiac memory alive & well. A J

# SOME OTHER SHOWS OF INTEREST

## Duryea Days - 29 Chandler



Link to more pictures: <https://photos.app.goo.gl/aA7vHS4gBvqZQRLBA>

## Early Times Chapter - Flathead Reunion - Ephrata, PA



Link to more pictures: <https://photos.app.goo.gl/pBWgS5D8kG3PS9vv9>

# Das Awkscht Fescht, Macungie, PA

Link to more pictures: <https://photos.app.goo.gl/LcENgf7okHL4G3zv8>



# **KNOEBEL'S = FOOD - FUN – FANTASY**

**Knoebel's slogan is most appropriate, and throw in free parking, free admission, great food, and a warm, beautiful summer day, and you have all the necessary ingredients for a great day at Central Pennsylvania's premier amusement park.**

**Our annual outing at the park was held Saturday, June 25<sup>th</sup>. After meeting at the pavilion at noon, and some discussion and Ponty-yakking, we adjourned to the park for a great afternoon. Attending were Don & Rosemary Haley, Steve Liebert, Ralph Keller, and the Burbage family, which included George & Amy, daughter Vicki and friend Cody, son Bill, and daughter Cecilia with friends Karly and Emily. They also brought a special guest Gretchen Burbage whom we all had fun playing with. We discussed a few club matters, including parking issues at GM on Display. We have some recommendations for the next BOD meeting for the 2023 show. We also discussed a few issues on the state of the club and came up with a few issues we would like to present to the BOD next year. A great day and fun was had by all.**

**Ralph Keller**





Save the date - Friday, November 25th. We'll visit Junkyard Barbie's 820 Old Bristol pike (old rt 13) Morrisville, Pa. 19067 (215)295-7610. Breakfast will be at I-Hop, located in the Oxford Point center, Business Rt. 1 and Oxford Valley Rd - across from Pep Boys. There is an entrance to the Shopping Center on RT. 1 & also Oxford Valley Rd. Breakfast at 8AM, Yard opens at 9 AM. This yard is Female owned and operated. She (Michele) and supports car clubs and a lot of local car shows and causes. This is a pic a part yard. She has a smattering of old inventory, but not a lot. 8 acre yard. She's always looking for more inventory. She is a Jeep owner, so she favors them in one part of the yard.

There is another yard, probably about a 1/2 mile away, J&J Salvage. 400 W. Post Rd. Fairless Hills, Pa. (215)295-6025 Lots of signs about "nothing here you want" I may call to see if he has inventory, or even sells parts.

I visited 4 yards near Wind Gap, Pa. thinking one may yield some interest. Got the "insurance will not let me have people in the yard" Out of that. Sibum's in East Stroudsburg has, and seems to specialize in "old cars".

I had talked to them probably 20 years ago. At that time we could have had an "escorted" tour. I may try that for next year. Escorted is better than no. At least you would get an idea of their inventory. When I stopped by, they were closed for vacation.

I also have a few other yards in my sights, but they are all a 2-1/2 - 3 hr. ride. It seems you have to get further out to be able to "tour" the yards, and also to find some older inventory.

**SIGN UP ON LINE AT [www.kscpoci.org](http://www.kscpoci.org) or call Stephan Liebert at (267) 247-6903**



**Editor:**  
**Richard Stover**  
**2314 Fonthill Ct.**  
**Langhorne, PA 19047**  
**kscpociinfo@gmail.com**

**2021 and 2022 Officers and Directors:**

President: Tom Wright  
Vice President: Sandy Kemp  
Treasurer: Richard Stover  
Secretary: Richard Stover  
Director: Ken Fernsler  
Director: Bill McIntosh  
Director: Jim Martin  
Director: Steve Martinez  
Director: Karen Britton  
Co-Activities Director: Ralph Keller  
Co-Activities Director: George Burbage  
Newsletter Editor: Richard Stover  
Chapter Historian: Ralph Keller  
Promotional Sales: George & Amy  
Burbage  
Display Board: Marlin Guigley

**Keystone State Chapter Membership Information**  
For general information, contact Richard Stover at  
[kscpociinfo@gmail.com](mailto:kscpociinfo@gmail.com)

Annual Chapter dues are \$20.00 (2023) payable in  
**January**. It is recommended that you be a member of  
the P.O.C.I. along with being a member of the Keystone  
State Chapter. Pay on line at [www.kscpoci.org](http://www.kscpoci.org) OR send  
dues payable to KSC-POCI,  
c/o Richard Stover; 2314 Fonthill Ct.;  
Langhorne, PA 19047

For Pontiac-Oakland Club International information  
go to [www.poci.org](http://www.poci.org) on the internet; or  
call: 877-368-3454; or email: [pociworldhq@aol.com](mailto:pociworldhq@aol.com)  
Annual POI dues are \$45.00 and includes a high  
quality monthly magazine.